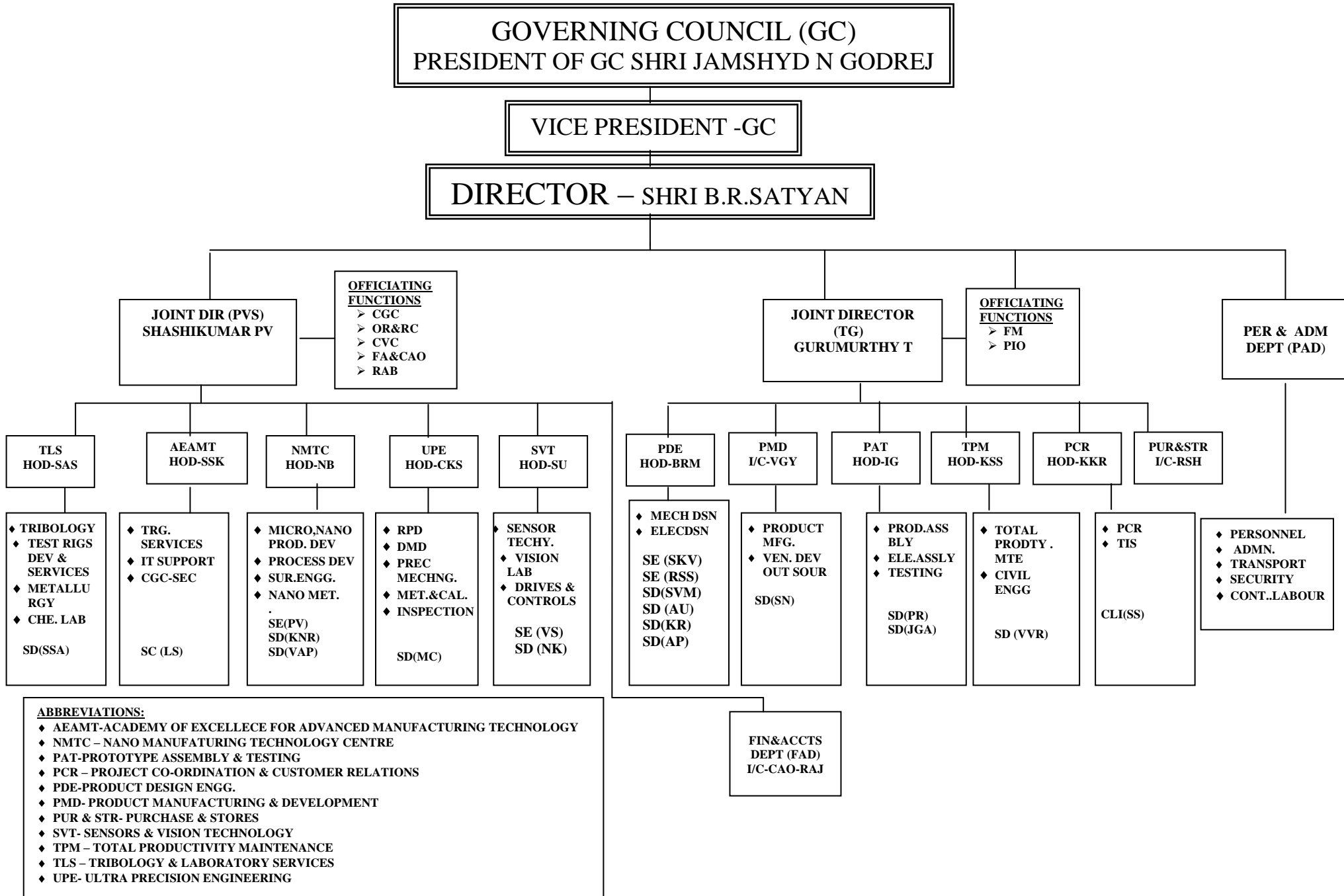


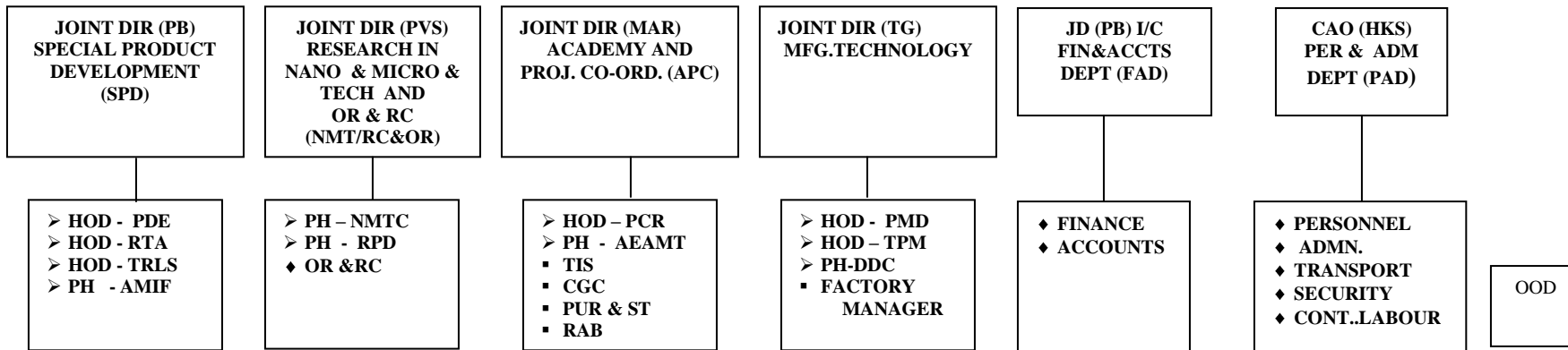
CENTRAL MANUFACTURING TECHNOLOGY INSTITUTE (AS ON 01.01.2012)

ORGANISATION CHART



ABBREVIATIONS:

- ♦ AEAMT-ACADEMY OF EXCELLECE FOR ADVANCED MANUFACTURING TECHNOLOGY
- ♦ NMTC – NANO MANUFATING TECHNOLOGY CENTRE
- ♦ PAT-PROTOTYPE ASSEMBLY & TESTING
- ♦ PCR – PROJECT CO-ORDINATION & CUSTOMER RELATIONS
- ♦ PDE-PRODUCT DESIGN ENGG.
- ♦ PMD- PRODUCT MANUFACTURING & DEVELOPMENT
- ♦ PUR & STR- PURCHASE & STORES
- ♦ SVT- SENSORS & VISION TECHNOLOGY
- ♦ TPM – TOTAL PRODUCTIVITY MAINTENANCE
- ♦ TLS – TRIBOLOGY & LABORATORY SERVICES
- ♦ UPE- ULTRA PRECISION ENGINEERING



NOTE:

AEAMT - ACADEMY OF EXCELLANCE IN ADVANCED
MANUFACTURING TECHNOLOGY
AMIF - ADVANCED MECHATRONICS INTEGRATION FACILITIES
CGC - CAPITAL GOODS COMMITTEE
DDC - DIGITAL DESIGN CENTRE
HOD - HEAD OF DEPARTMENT
OOD - OFFICE OF DIRECTOR
NMTC - NANO & MICRO TECHNOLOGY CENTRE
PCR - PROJECT CO-ORDINATION & CUSTOMER RELATIONS
PDE - PRODUCT DESIGN & ENGINEERING
PE - PRECISION ENGINEERING

NOTE:

PH - PROJECT HEAD
PMD - PROTOTYPE MANUFACTURING DEPARTMENT
PUR&ST - PURCHASE & STORES
RAB - RESEARCH ADVISORY BOARD
RC&OR- REGIONAL CENTRE & OUT REACH PROGRAMMES
RPD - RAPID PRODUCT DEVELOPMENT
RTA - RESEARCH IN TESTING & ASSEMBLY
SPD - SPECIAL PRODUCT DEVELOPMENT
TIS - TECHNICAL INFORMATION SERVICES
TPM - TOTAL PRODUCTIVITY MANANGEMENT
TRLS - TEST RIGS FACILITIES & LABORATORY SERVICES